



Agency Priority Goal Action Plan

Worker Safety: Reduce Miner Injuries

Goal Leaders:

David Zatezalo, Assistant Secretary, Mine Safety and Health Administration (MSHA)

Kevin Stricklin, Acting Administrator, Metal/Nonmetal Safety and Health

Tim Watkins, Acting Administrator, Coal Safety and Health

Sheila McConnell, Director, Standards, Regulations and Variances

Overview

Goal Statement

- By September 30, 2019, reduce the reportable injury rate associated with powered haulage equipment, the primary cause of miners' injuries, by 10 percent per year based on a rolling 5-year average per 200,000 hours worked.

Challenge

- MSHA works to prevent death, illness, and injury from mining and promote safe and healthful workplaces for U.S. miners. Since 2013, total injury and fatality rates have declined by approximately 26 percent and 17 percent respectively. However, MSHA has determined that accidents caused by powered haulage equipment, which is a category of moving machines used to transport miners or haul materials in surface and underground mines, contributed to 30 percent of fatalities since 2013, and is the primary cause of miners' injuries. The stated goal supports the Agency's continued efforts to reduce fatalities and injuries at all mines.

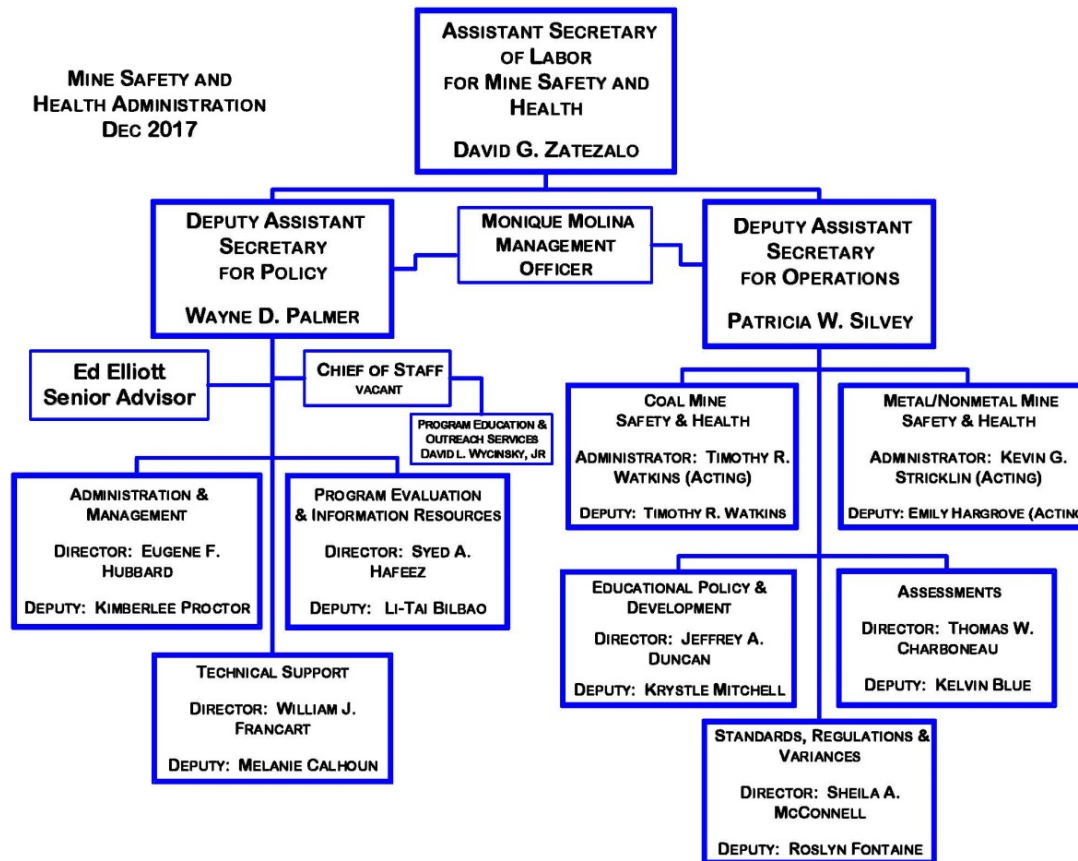
Opportunity

- MSHA will work to reduce fatalities and injuries by targeting workplace hazards that represent a primary cause of fatalities and injuries.

Leadership

Core Team:

- David Zatezalo, Assistant Secretary, Mine Safety and Health Administration
- Kevin Stricklin, Acting Administrator, Metal/Nonmetal Safety and Health
- Tim Watkins, Acting Administrator, Coal Safety and Health
- Sheila McConnell, Director, Standards, Regulations and Variances



Goal Structure & Strategies

Strategies:

- Continue mandated inspections of mine sites: four times per year for underground mines and two times per year for surface mines.
- Conduct technical compliance assistance visits with mines, including providing best practices focused on the safe use of powered haulage equipment.
- Enhance mine operator and miner training regarding powered haulage equipment safety.
- Review powered haulage accidents to identify root causes or patterns, if any, that can serve as focus of targeted initiatives.
- Optimize use of technology and other innovations in mining activities involving powered haulage equipment.
- Invite Alliances, mining associations, labor organizations, mining companies, and state agencies to partner with MSHA in efforts to focus on powered haulage injury reductions.
- Publish on MSHA's website weekly near miss and serious accidents focusing on powered haulage accidents and injuries.
- Provide training specific to reducing accidents caused by powered haulage equipment at Mine Safety and Health Conferences.

Summary of Progress – FY18 Q3

In the third quarter of FY 2018, MSHA initiated various outreach efforts to promote best practices to prevent injuries and fatalities associated with powered haulage accidents. MSHA developed a [Powered Haulage Safety Initiative webpage](#) that outlines the effort and links to three subpages covering: Collision avoidance, preventing large powered haulage vehicles striking smaller vehicles; Seatbelt usage and; Conveyor belt safety, including disconnecting power and using crosswalks safely.

In addition, MSHA created a tri-fold brochure on conveyor safety in English and Spanish that will be distributed to all relevant mining operations by MSHA inspectors. MSHA issued a [Request for Information](#) through the Federal Register seeking input on technological advances that can promote safety in powered haulage. Assistant Secretary David Zatezalo published a [blog](#) to promote greater engagement from stakeholders in this effort.

Furthermore, the Quarterly Training/Stakeholder call in April 2018 focused on powered haulage safety. During the call, MSHA safety experts described recent powered haulage accidents resulting in injuries and fatalities and ways that they could have been prevented.

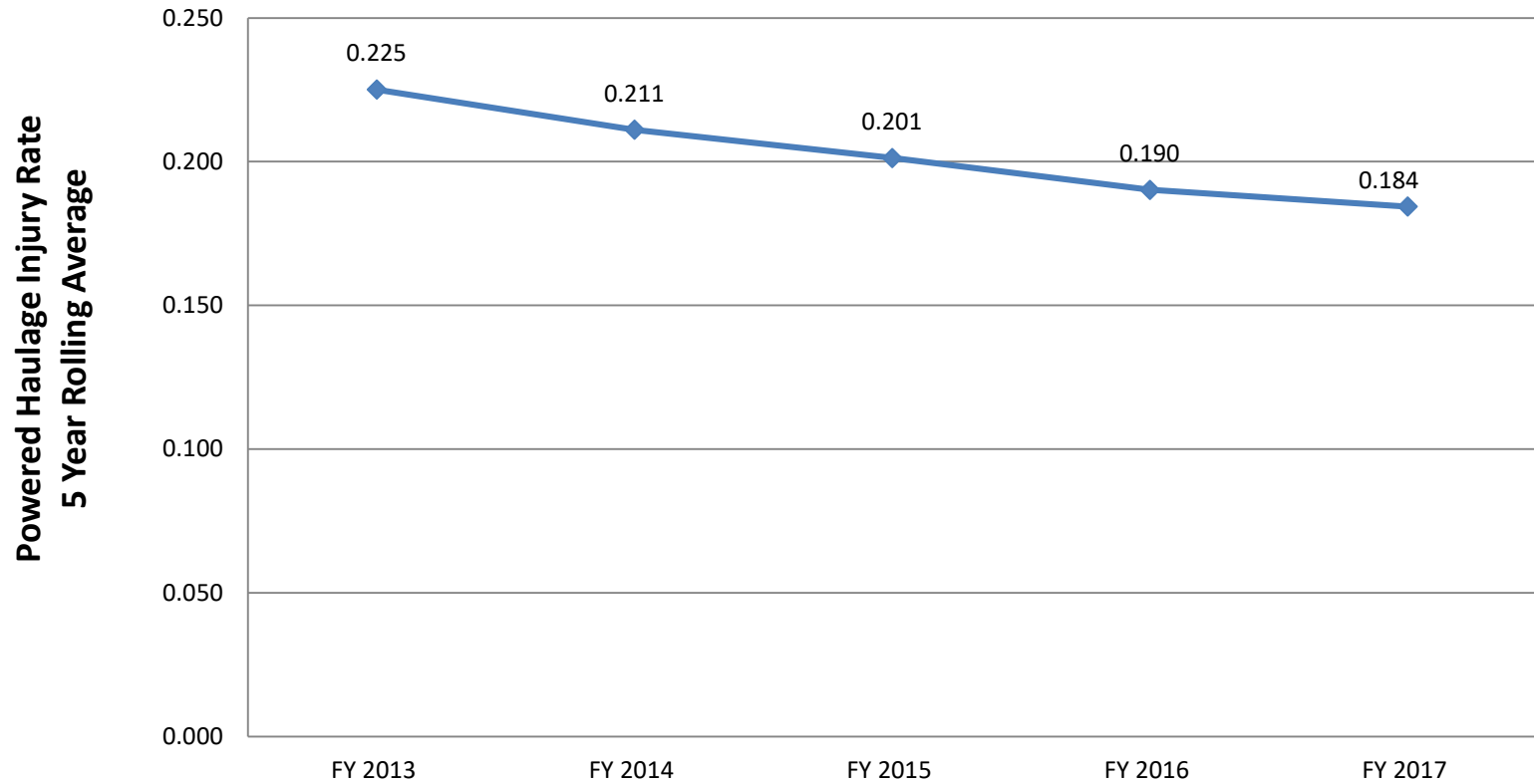
NOTE: FY 2018 will be the first year MSHA will have this goal as its focused Agency Priority Goal. Since this is an annual goal, MSHA will first report on progress during the first quarter of FY 2019.

Key Milestones

Milestone Summary					
Key Milestone	Milestone Due Date	Milestone Status	Change from last quarter	Owner	Comments
Review Accident Data involving Powered Haulage to identify root causes of accidents	Oct 1, 2018	On-Track	N/A	M/NM, Coal, PEIR	MSHA will report quarterly progress on this milestone.
Develop Rollout Plan on addressing corrective actions to the root causes	Dec 31, 2018	On-Track	N/A	M/NM , Coal, EPD, Tech Support	MSHA will report quarterly on this milestone.
Rollout Plan	Jan 2019	On-Track	N/A	M/NM , Coal, EPD	MSHA will report quarterly on status of implementation.
Complete Rollout Plan	July 2019	On-Track	N/A	M/NM , Coal, EPD	
Evaluate effectiveness of Powered Haulage Accident Reduction Initiative	August 2019 – Oct 2020	On-Track	N/A	M/NM, Coal, PEIR	Note: while MSHA believes the development and rollout of actions to meet the goal will take time, MSHA will report the measure in first quarter of FY19.

Key Indicators

5-Year Rolling Average Injury Rate (per 200,000 hours worked) Caused by Powered Haulage Equipment



Data Accuracy and Reliability

The MSHA Standardized Information System (MSIS) is the Agency's core information management and data repository system. MSIS collects and maintains information about mines, mine operations, miner and instructor qualifications and certifications, certification of mining equipment, mine inspections, mine accident, injury, employment and production information, coal dust sampling management, and infractions of mandatory safety and health standards.

Injury data is self-reported by the operators on MSHA Mine Accident, Injury, and Illness Report, form 7000-1. These reports are submitted to MSHA within 10 work days after an accident occurrence.

Additional Information

Contributing Programs

Organizations:

- MSHA
- Coal, M/NM, EPD, PEIR, Tech Support

Regulations:

- 30 CFR (Mineral Resources): 56/57.9100; 56/57.9200; 56/57.14200; 56/57.14130; 77.404;77.1400; 77.1600; 75.1725; 75.140375.500; 75.1000; 75.1400

Tax Expenditures:

- N/A

Policies:

- Policies are for the standards listed in Regulations

Other Federal Activities:

- N/A

Stakeholder / Congressional Consultations

Feedback and suggestions obtained from stakeholders during the rollout phase will be incorporated into updating the rollout plan, and their ideas and suggestions will also be incorporated into future initiatives.